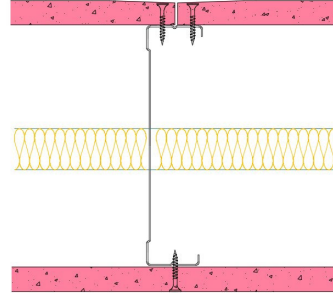


146-K-56(25) - SPEEDLINE System Data Sheet - Version V1 (24-10-23)

SPEEDLINE 146mm 'C' Stud Partition @600mm
Ctrs, with Knauf 15mm Fire Panel each side,
25mm APR



System Performance Breakdown

Fire Resistance:

BS476 Part 22:1987:

Test Ref & Date or Applied Ref & Report:

Max Height:

Thickness:

Duty Grade: BS 5234: Part 2:1992:

Sound Insulation:

60/60 Minutes (Integrity/Insulation).

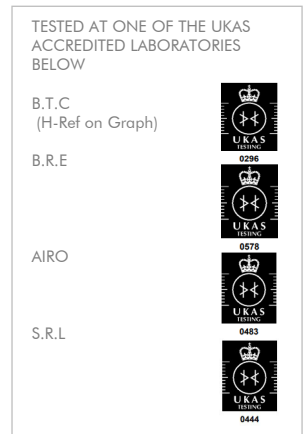
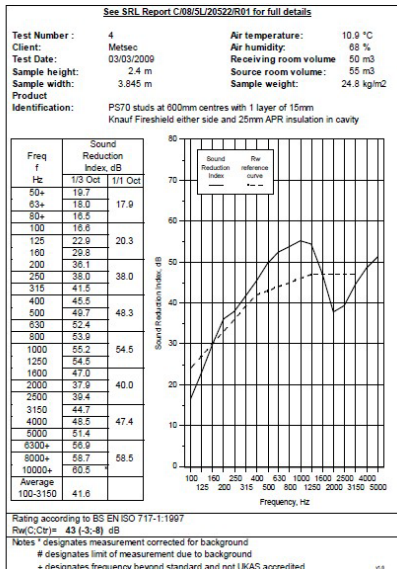
BRE 248834 - BRE Report P102396-1011B

Refer to Speedline Specification Clause

178 mm. (At Base Track, Excluding Finishes)

Heavy - Annexes A-F

43 R_wdB, Date Tested or Assessed Against - 70-K-56(25)



George Thomson
George Thomson
Project Engineer

Trevor Hickman
Trevor Hickman
Deputy Technical Manager

SPEEDLINE Drywall Systems, Adsetts House, 16 Europa View, Sheffield Business Park, Sheffield, S9 1XH.

Tel: 0114 231 8030.

Email: enquiries@speedlinedrywall.co.uk

(As per the requirements set out in ISO/IEC 17025:2017 regarding test data the results stated have been carried out by voestalpine Metsec plc as part of the contract to supply Speedline Metal Sections to SIG Plc)